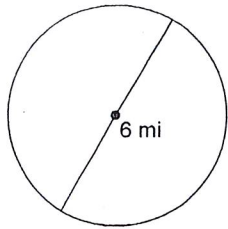


Quiz - Area

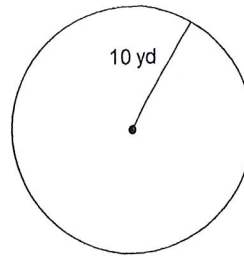
Find the exact area and circumference of each.

1)



$A = 9\pi$
 $C = 60\pi$

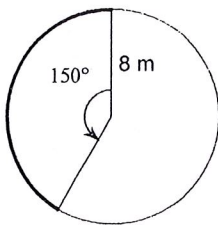
2)



$A = 100\pi$
 $C = 20\pi$

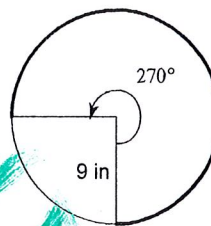
Find the length of each arc.

3)



$16\pi \left(\frac{150}{360}\right)$
 $\frac{20\pi}{3}$

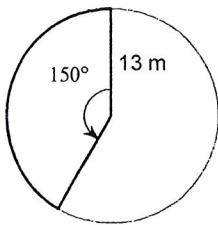
4)



$18\pi \left(\frac{3}{4}\right)$
 $= \frac{27\pi}{2}$

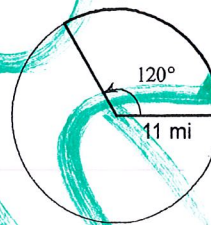
Find the area of each sector.

5)



$169\pi \left(\frac{15}{36}\right)$
 $\frac{845\pi}{12}$

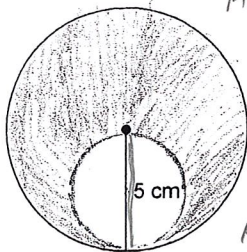
6)



$121\pi \left(\frac{1}{3}\right) = \frac{121\pi}{3}$

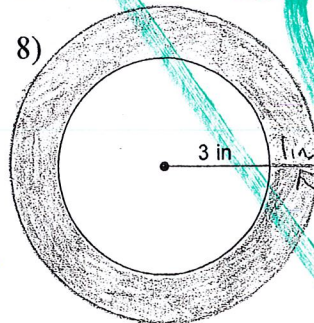
Find the shaded area. Answers should be exact. In terms of π .

7)



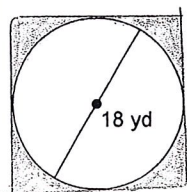
$A_{big} = 25\pi$
 $A_{sm} = 2.5^2\pi = 6.25\pi$
 $A_{sh} = 25\pi - 6.25\pi = 18.75\pi$

8)



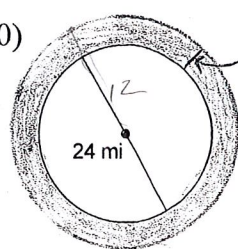
$A_{big} = 16\pi$
 $A_{sm} = 9\pi$
 $A_{sh} = 7\pi$

9)



$324 - 81\pi$

10)



$A_{big} = 256\pi$
 $A_{sm} = 144\pi$
 $A_{sh} = 112\pi$